

No.	Date	By	Revision

**SOUTH GARTH AVENUE
TRAFFIC CALMING**

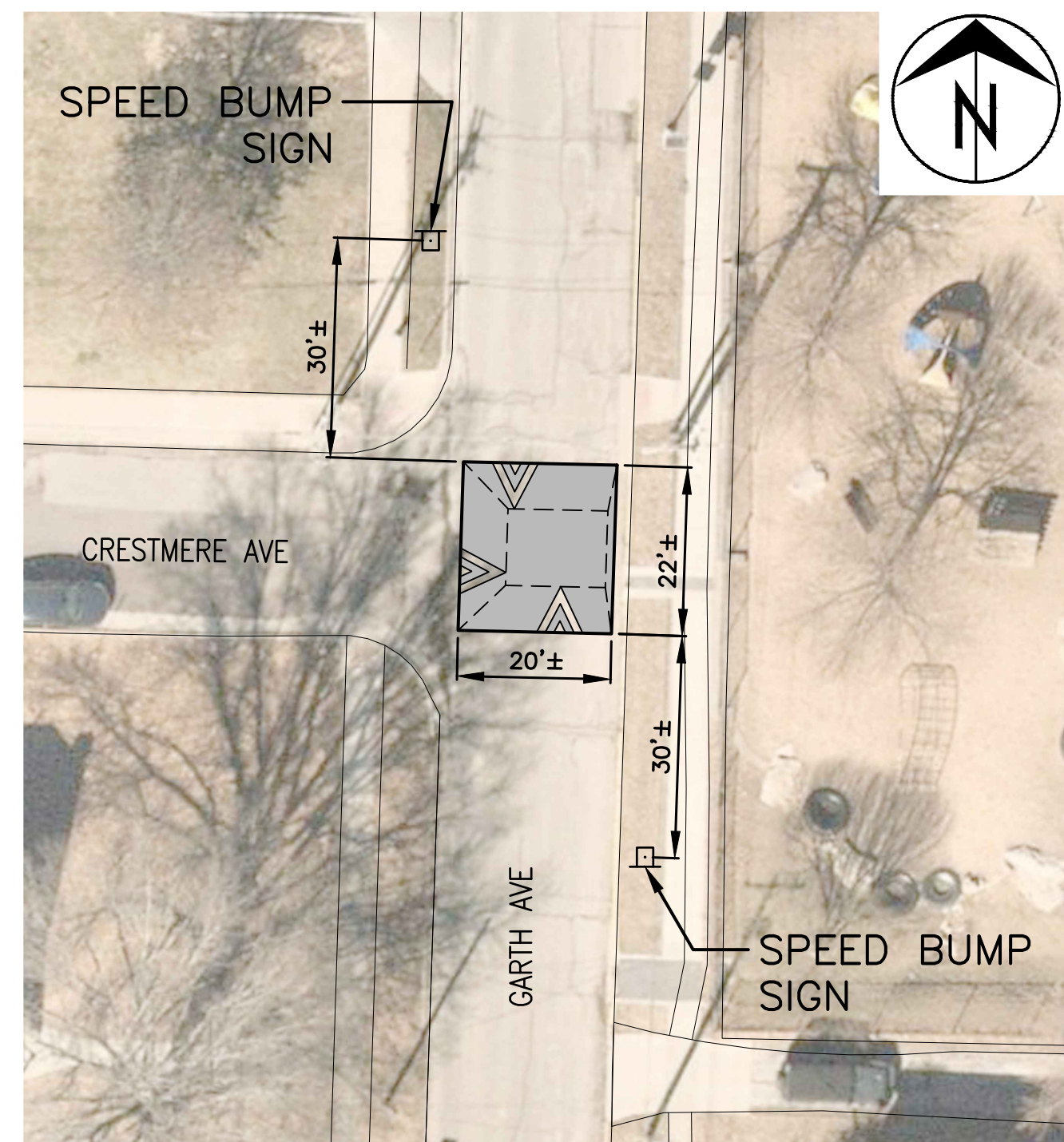
Plan

City of Columbia, Missouri
Department of Public Works

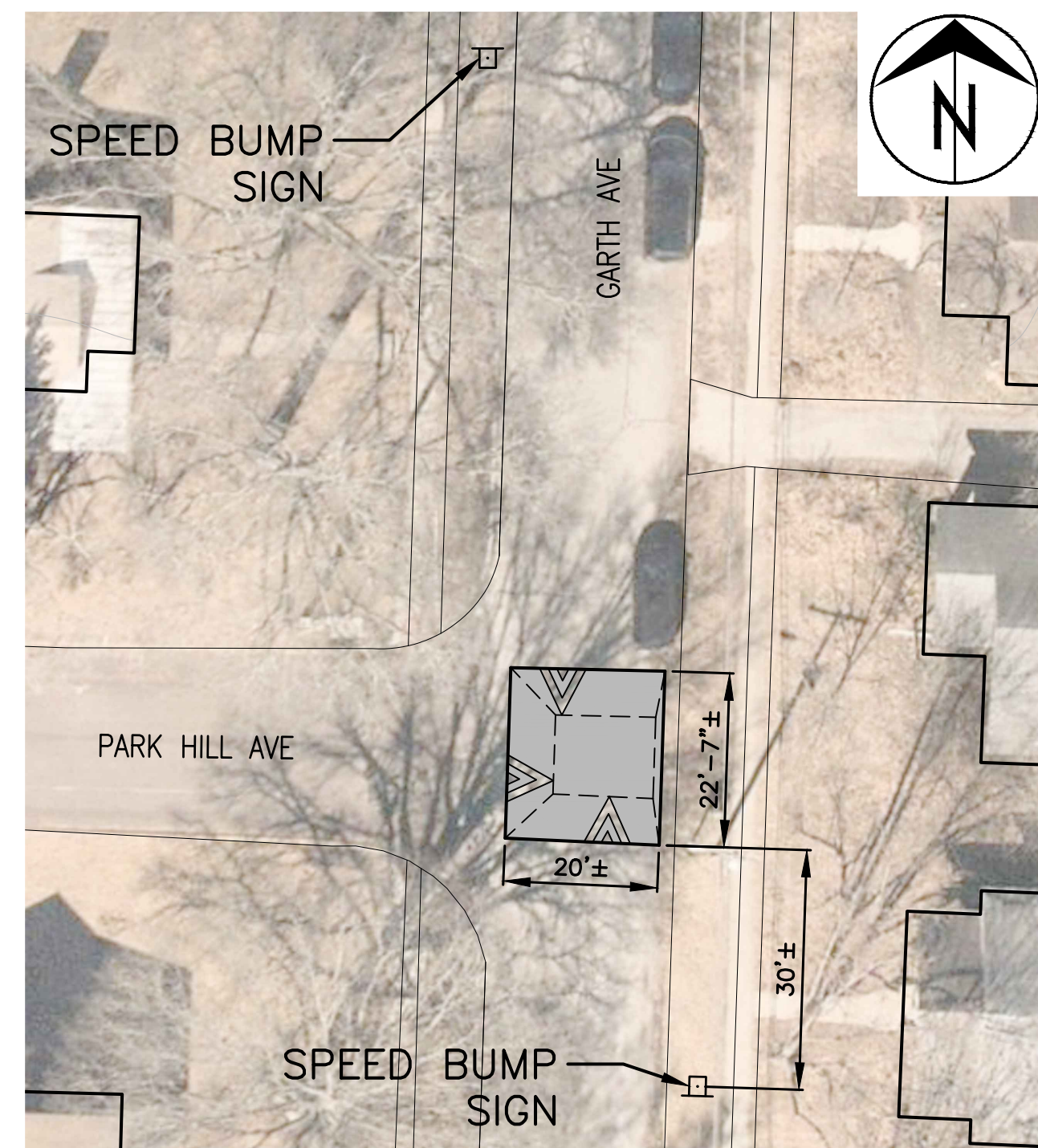
File No.	
Scale:	1" = 30'
Date:	10/19/2022
Des.	A.S.B.
Dwn.	T.M.G.
Chk.	J.D.R.

o:\caddpro\traffic\calming\garth_avenue\garth_ave_traffic_calming.dwg

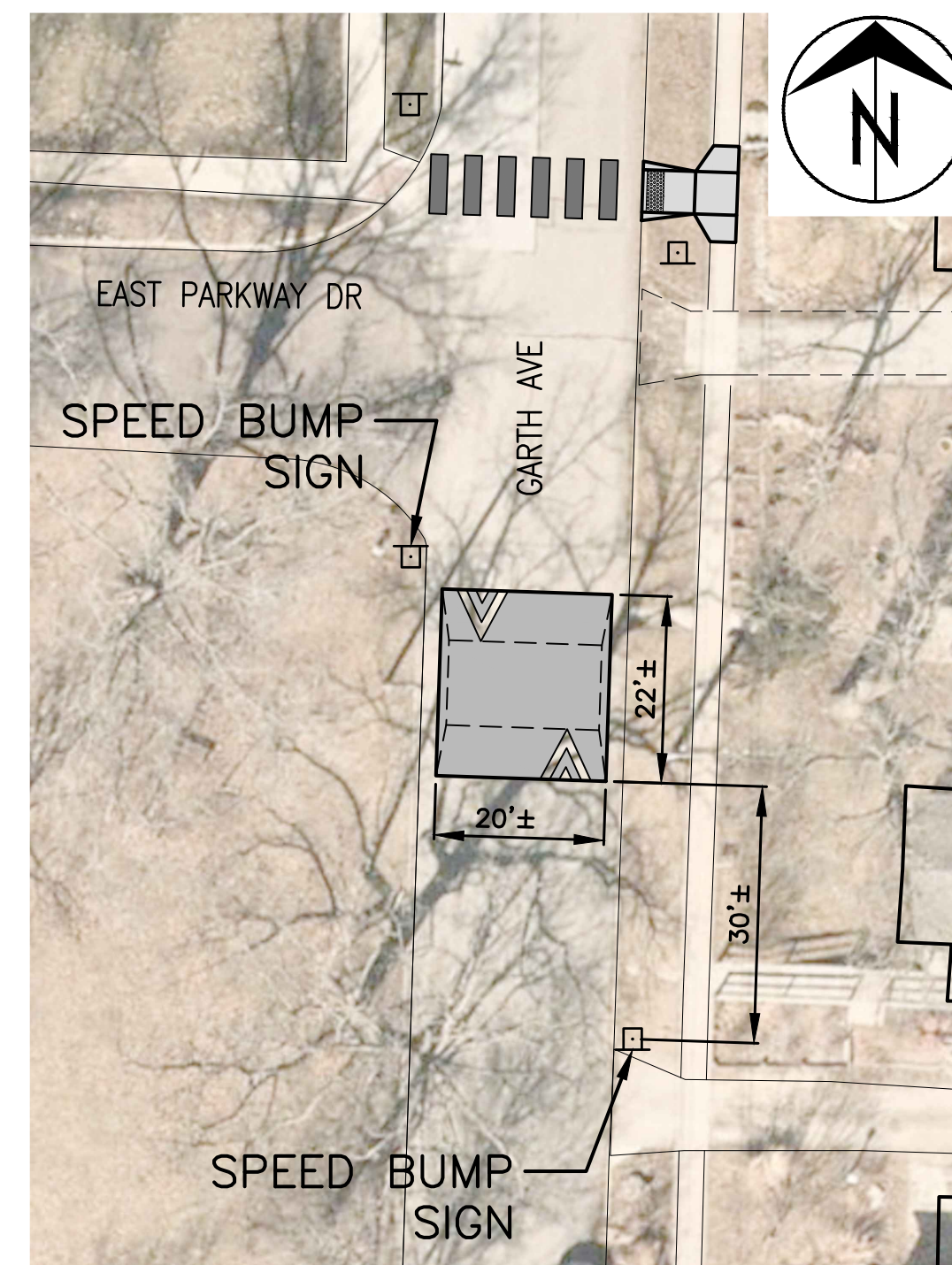
2011 Orthophoto Source: Boone County Assessor



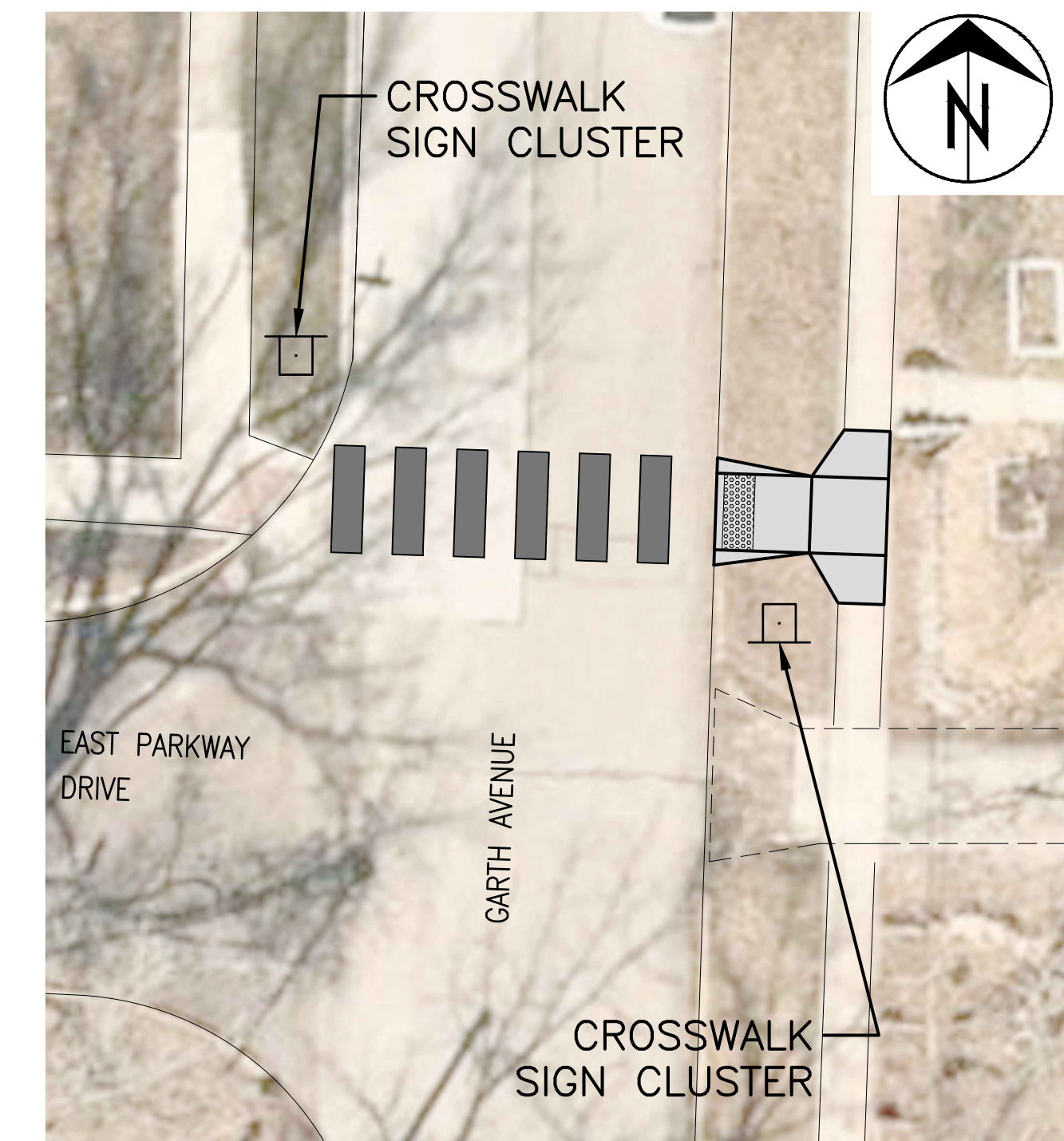
SOUTH GARTH AVENUE – CRESTMERE AVENUE
1" = 20'



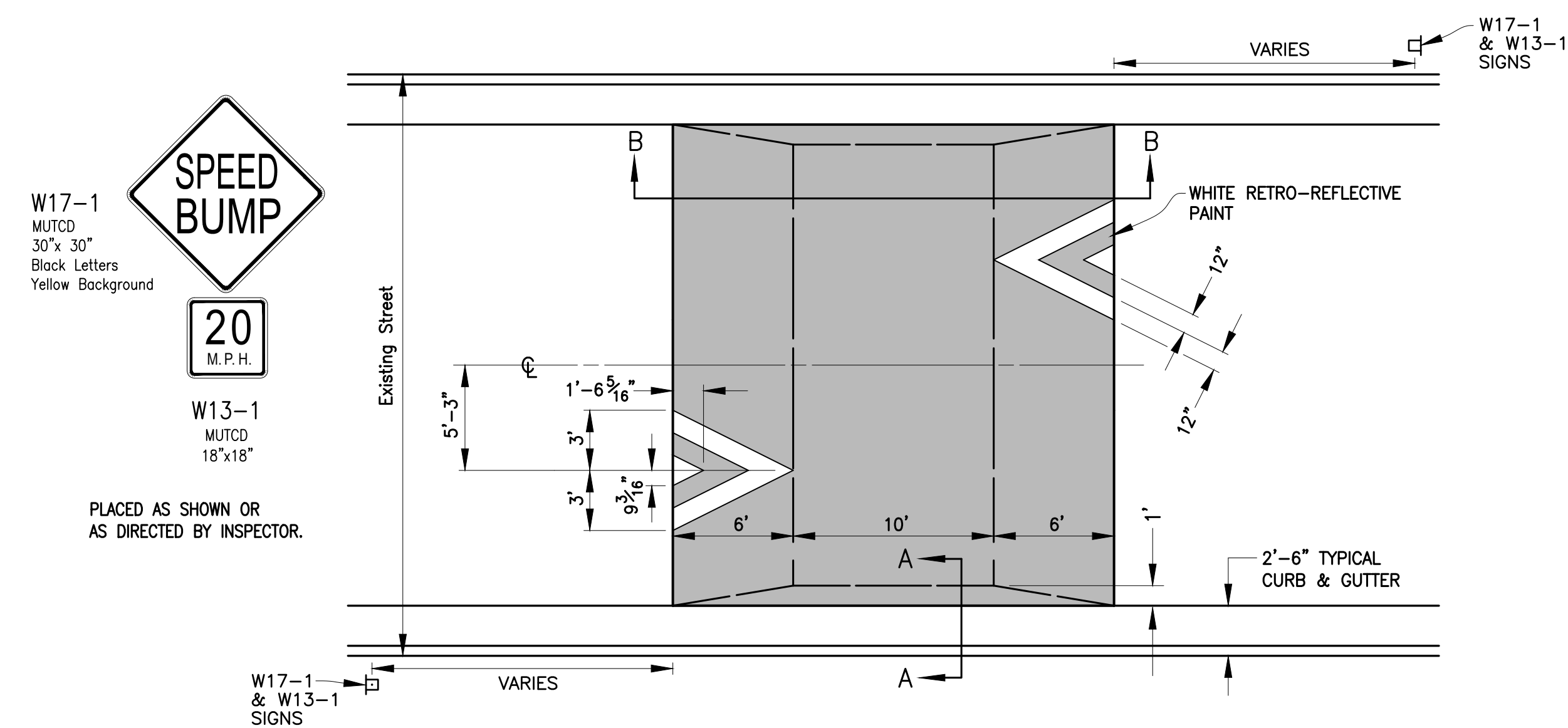
SOUTH GARTH AVENUE – PARK HILL AVENUE
1" = 20'



300 SOUTH GARTH AVENUE
1" = 20'

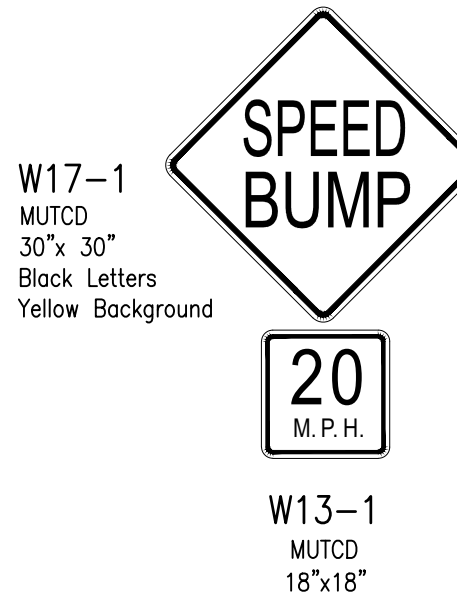


SOUTH GARTH AVENUE – EAST PARKWAY DRIVE
1" = 10'

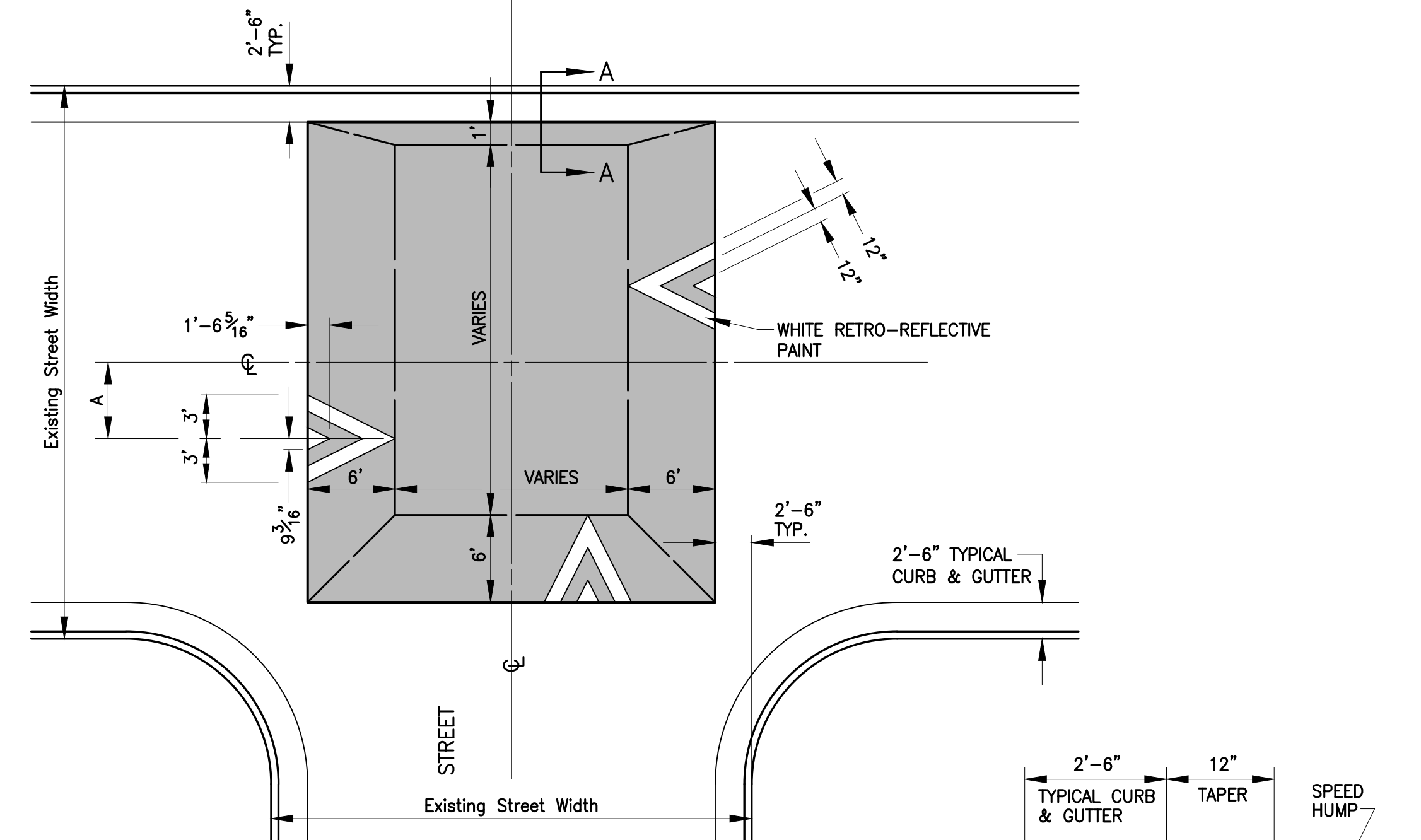


PLAN
NOT TO SCALE

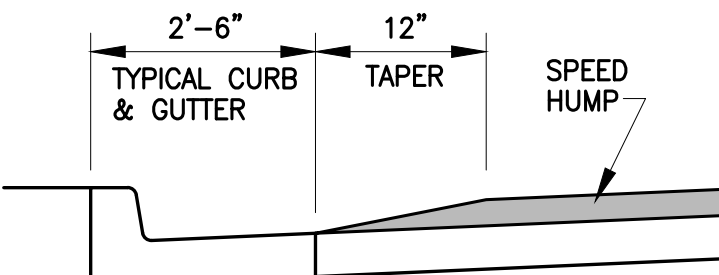
Existing Street Width (Back of Curb to Back of Curb)	A
38' & wider	5'-3"
between 32' & 38'	3'-9"
32' & narrower	3'-2"



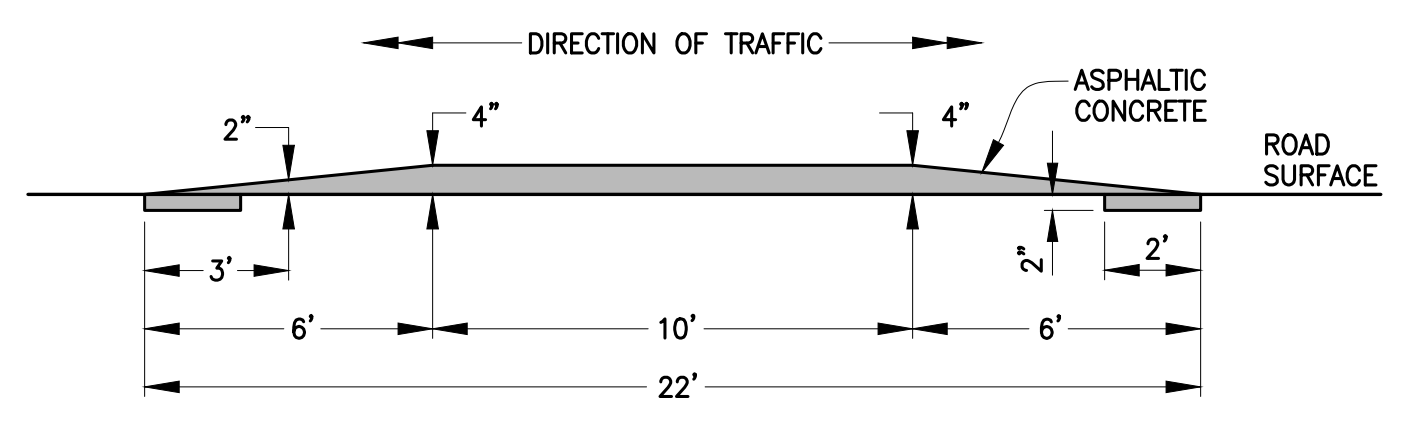
PLACED APPROX. 30' BEFORE TABLE OR AS DIRECTED BY INSPECTOR.



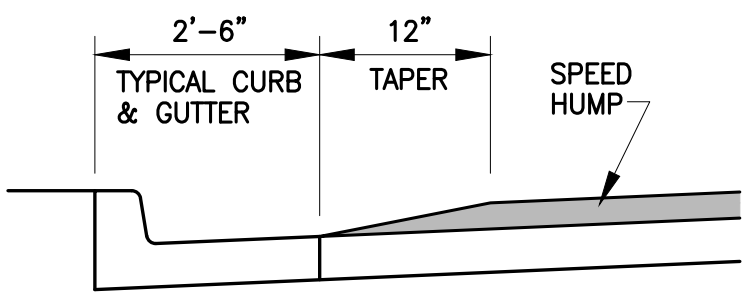
PLAN
NOT TO SCALE



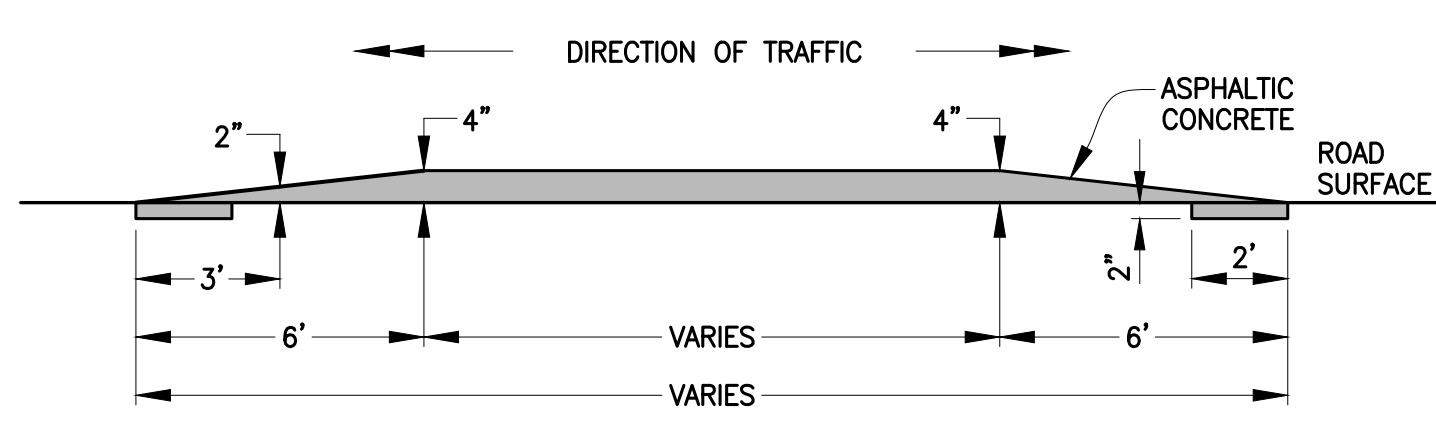
SECTION A-A
NOT TO SCALE



SECTION B-B
NOT TO SCALE



SECTION A-A
NOT TO SCALE



PROFILE
NOT TO SCALE

SPEED TABLE – T-INTERSECTION

Revision	By	Date	No.

**SOUTH GARTH AVENUE
TRAFFIC CALMING**
Speed Hump, Speed Table, Crosswalk

City of Columbia, Missouri
Department of Public Works

Shane Steven Creech
Registered Professional Engineer
PE-2007011061

File No. .
Scale: As Shown
Date: 10/24/2022
Des. A.S.B.
Dwn. T.M.G.
Chk. J.D.R.