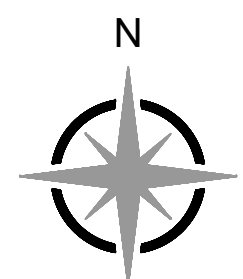




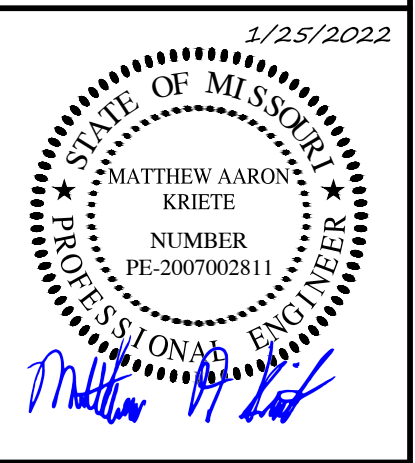
Engineering Surveys & Services  
DELIVERING YOUR VISION™

1113 Fay Street, Columbia, MO 65201  
573-449-2646  
802 El Dorado Drive, Jefferson City, MO 65101  
873-636-3303  
1775 West Main Street, Sedalia, MO 65301  
660-826-8618  
www.es-inc.com  
MO Engineering Corp. # 2004005018



0 1"  
SCALE: 1" = 20'

WESTERN OIL, INC.  
PLANNED DEVELOPMENT PLAN FOR  
PETRO-MART  
500 NORTH COLLEGE AVENUE  
COLUMBIA, BOONE COUNTY, MISSOURI



MATTHEW A. KRIETE  
PROFESSIONAL ENGINEER  
PE-2007002811

IF ORIGINAL SIGNATURE OR DIGITAL AUTHENTICATION IS NOT PRESENT THIS MEDIA SHOULD NOT BE CONSIDERED A CERTIFIED DOCUMENT.

Date  
**DECEMBER 27, 2021**

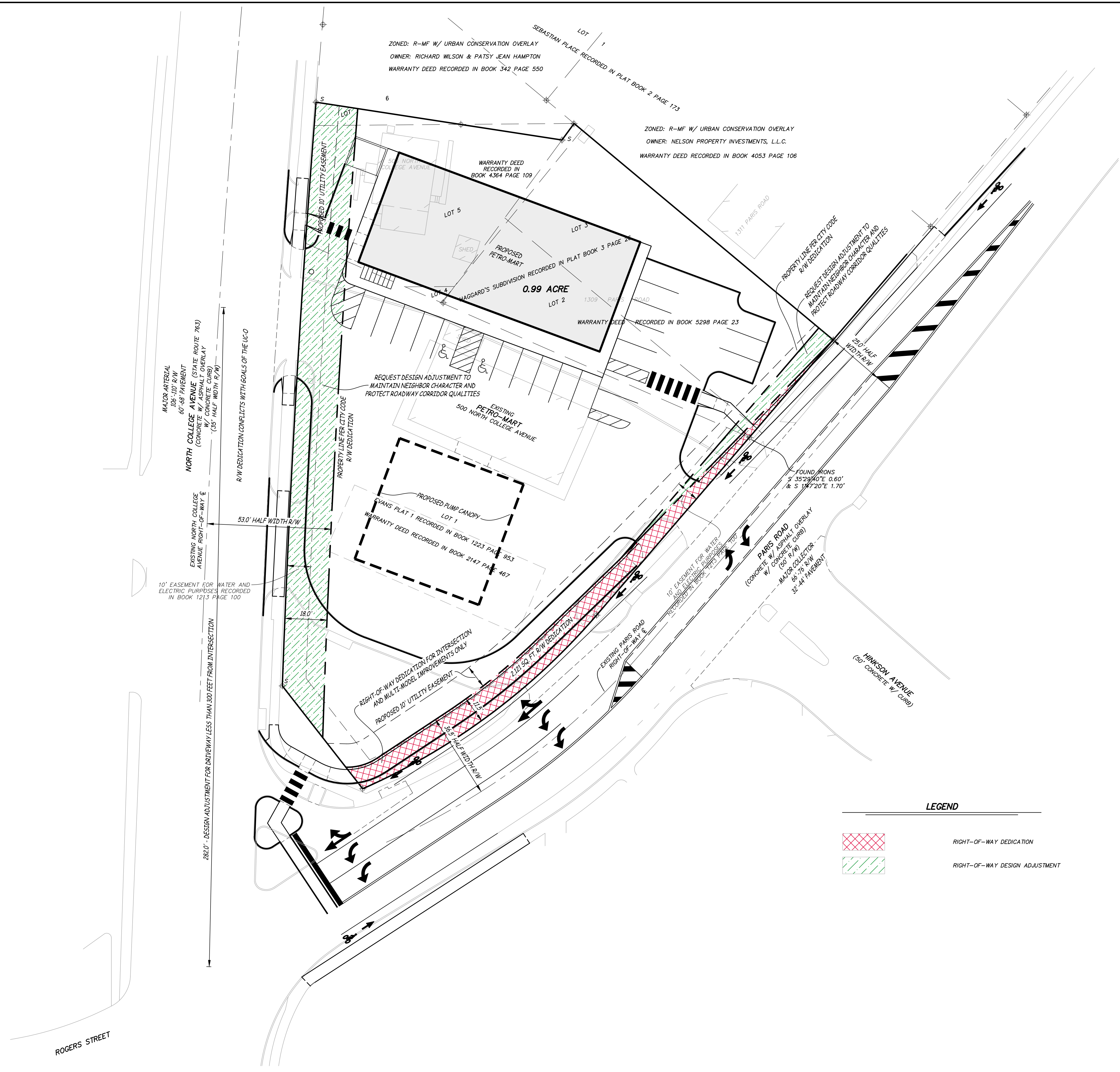
Revised  
① JANUARY 25, 2022

Design: KAL Drawn: BR

RIGHT-OF-WAY DEDICATION & DESIGN ADJUSTMENT PLAN  
Sheet

**C2.01**

ES&S PROJECT NO. 15375



**LEGEND**

RIGHT-OF-WAY DEDICATION

RIGHT-OF-WAY DESIGN ADJUSTMENT

P:\GENERAL PROJECTS\15375-WESTERN OIL-PETRO-MART\_PD\_PLAN\_PREM\_PLAT\CA1015375\_PD\_PLAN.DWG 1/25/2022