





Source: Nearmap. <https://www.nearmap.com/us/en>, 2019 Imagery Source: Boone County Assessors Office

Case # 175-2023 - Route Z Investments LLC Annexation Agreement



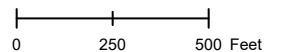
-  Columbia City Limit
-  City Property
-  City Zoning
-  Parcels

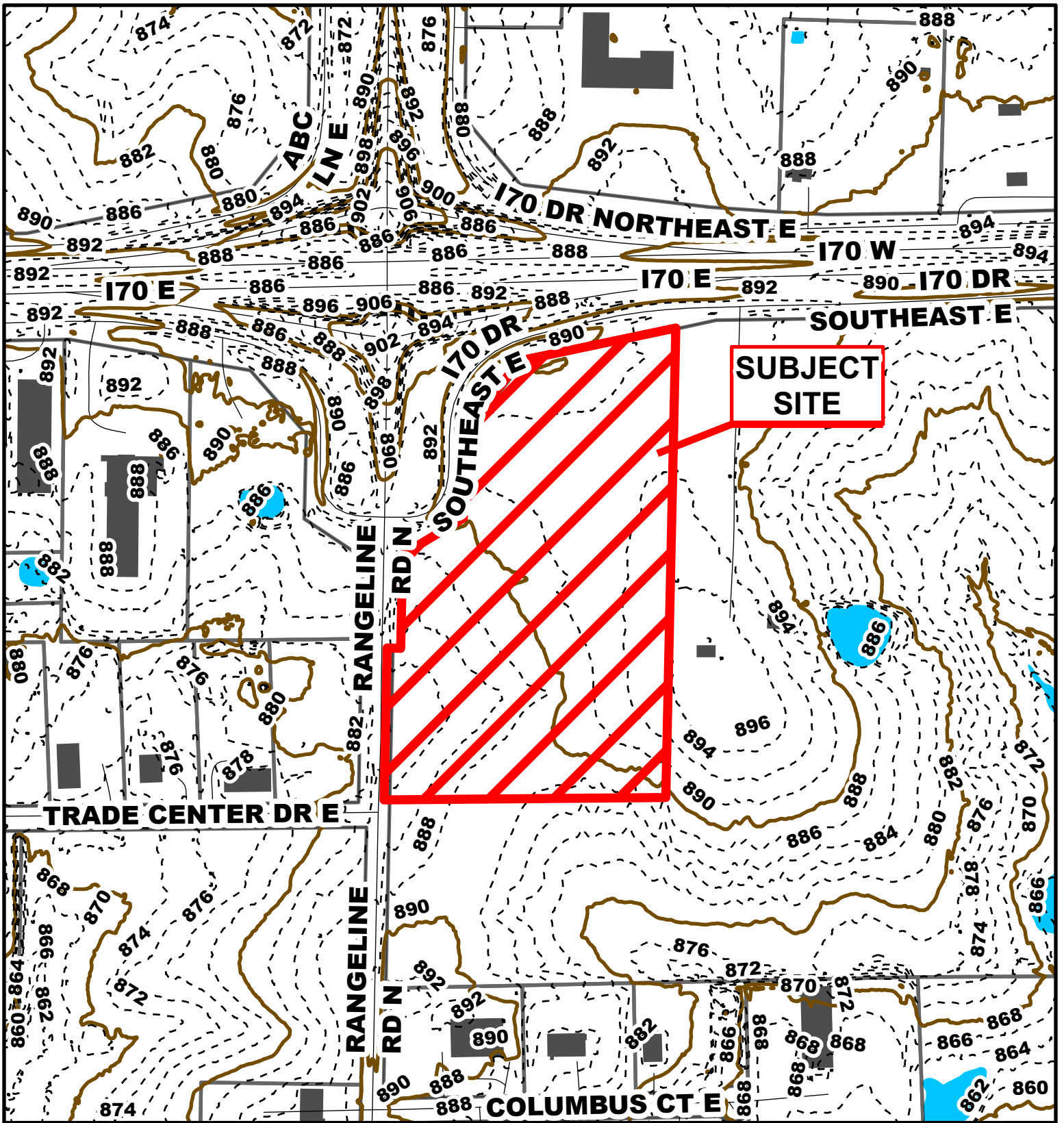


Parcel Data Source: Boone County Assessor

Created by The City of Columbia - Community Development Department

2019 Imagery: NearMap

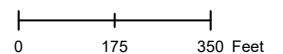


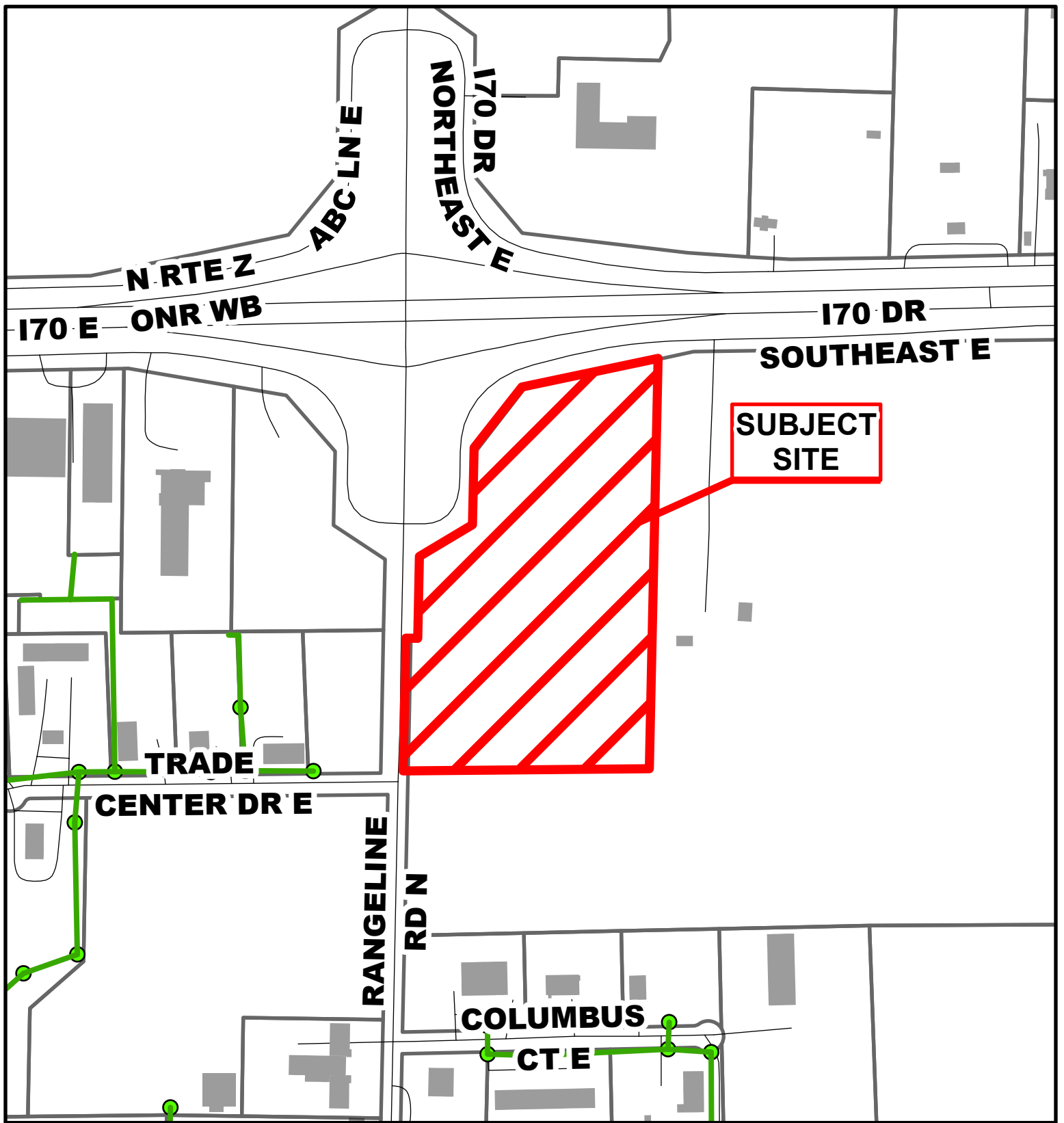


Case # 175-2023 - Route Z Investments LLC Annexation Agreement



- 10 Foot Contour Lines
- 2 Foot Contour Lines
- City of Columbia
- Parcels





**Case # 175-2023 - Route Z Investments LLC
Annexation Agreement**



- BCRSD Sanitary Line
- Parcels
- Columbia City Limits

