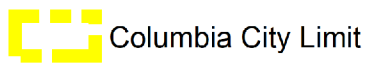
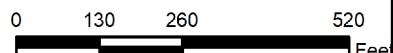


Source: Nearmap. <https://www.nearmap.com/us/en>

Case # 68-2022 -Lot 3 Horse Fair Subdivision Permanent Zoning



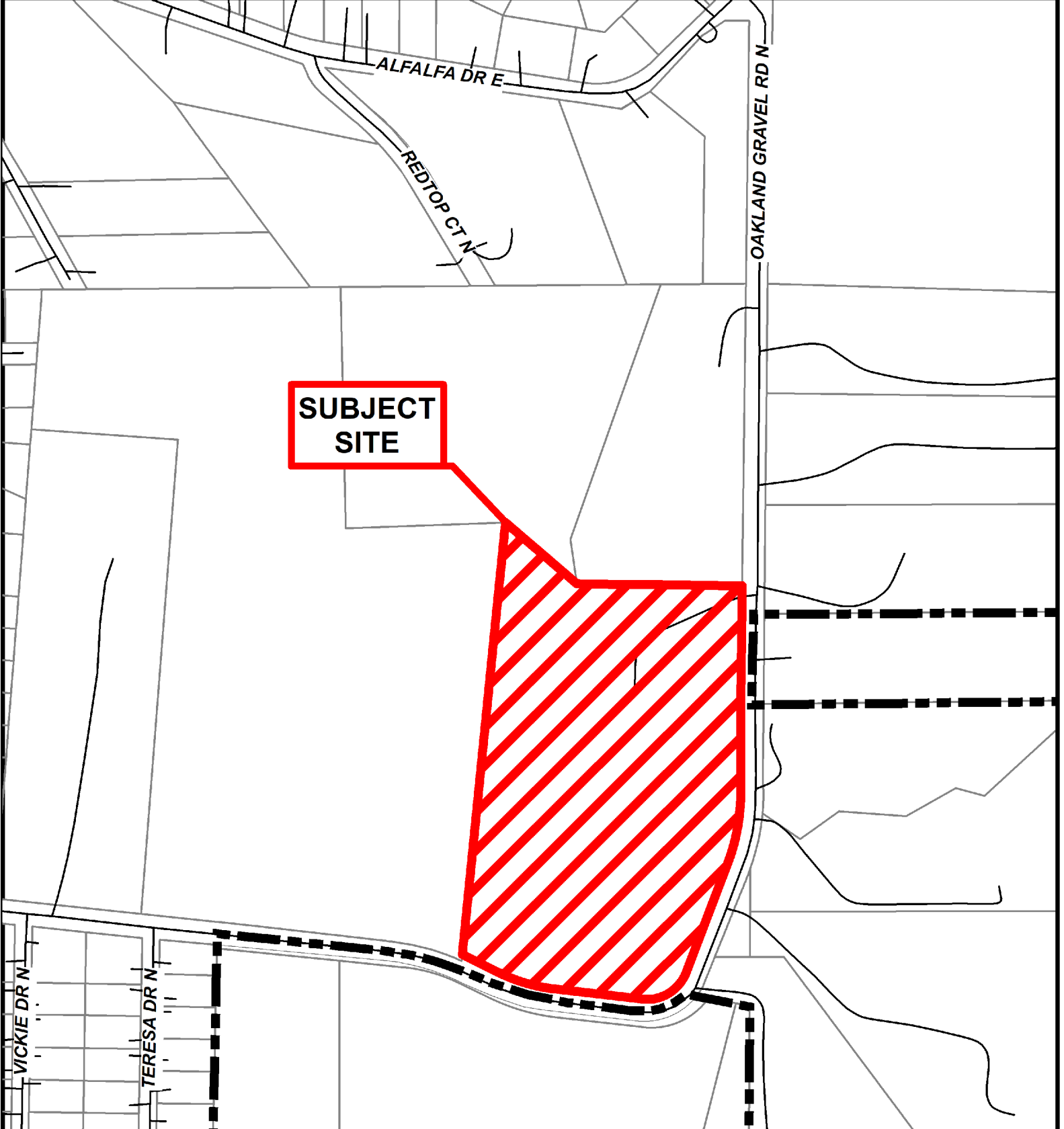
Columbia City Limit



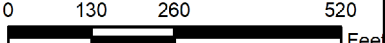
1 inch = 300 feet

Parcel Data Source: Boone County Assessor

Created by The City of Columbia - Community Development Department



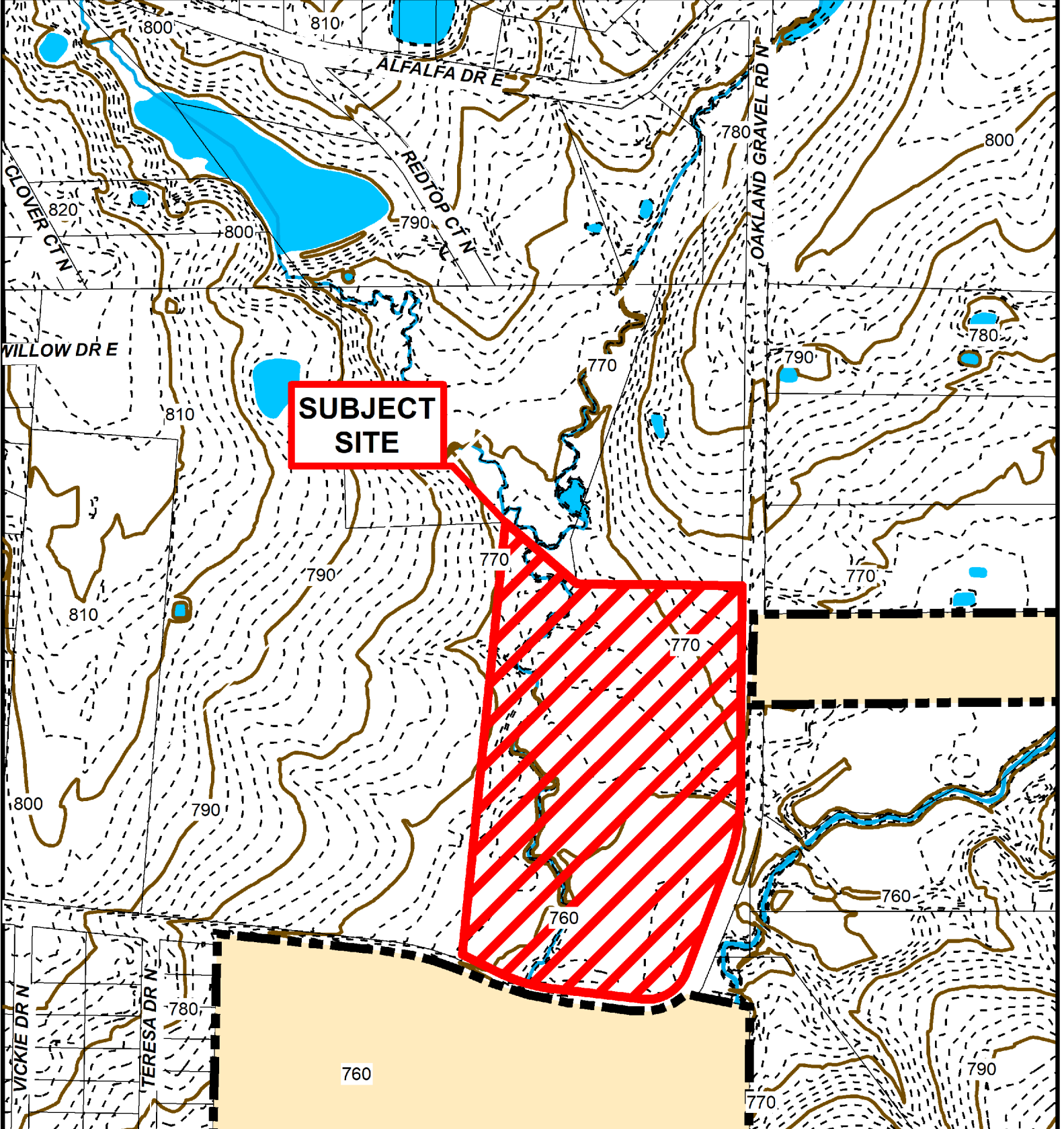
**Case # 68-2022 -Lot 3 Horse Fair Subdivision
Permanent Zoning**






1 inch = 300 feet

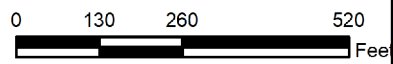
Parcel Data Source: Boone County Assessor

Created by The City of Columbia - Community Development Department



**Case # 68-2022 -Lot 3 Horse Fair Subdivision
Permanent Zoning**

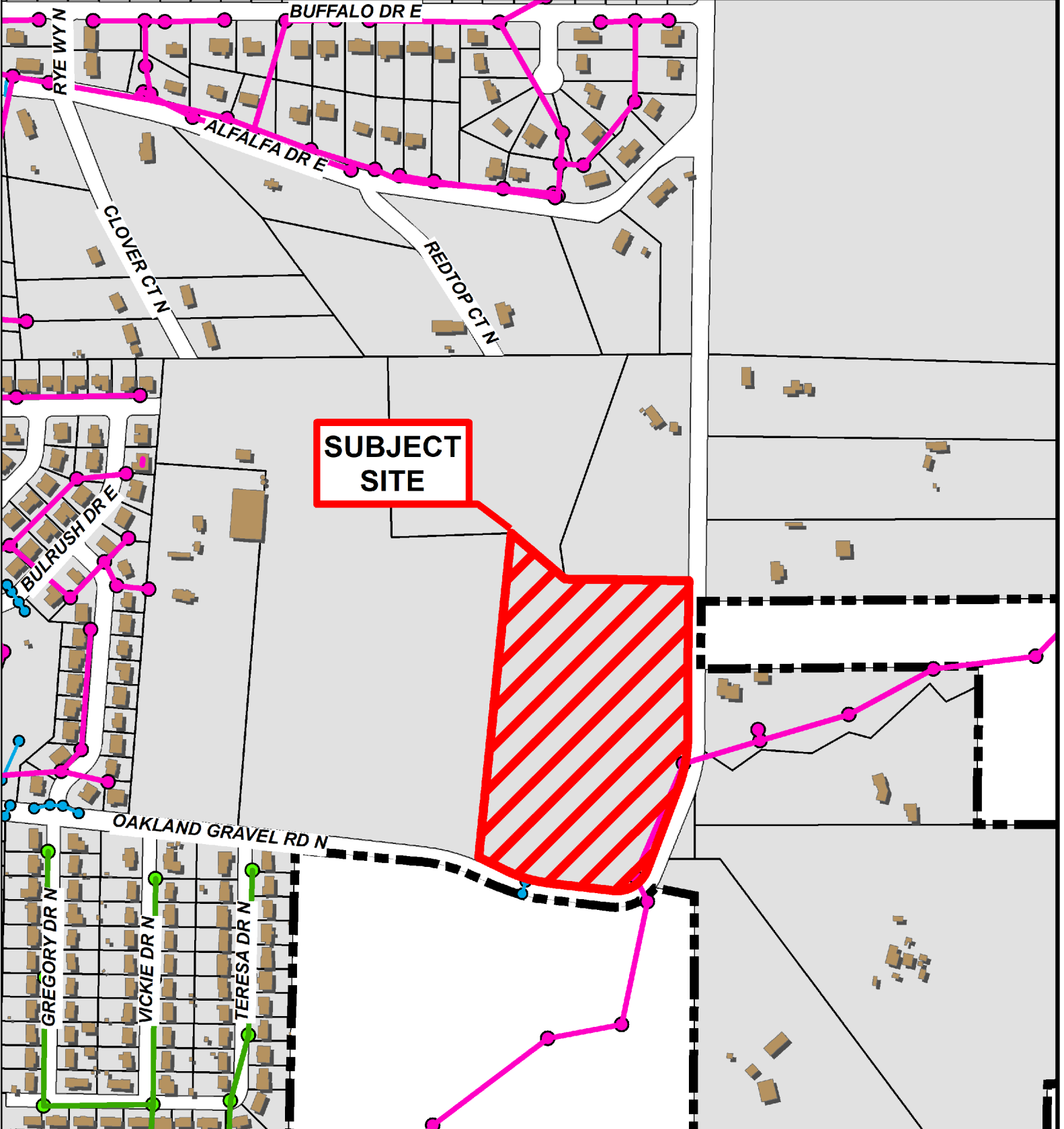
-  Columbia City Limit
-  10 Foot Contour Lines
-  2 Foot Contour Lines



Parcel Data Source: Boone County Assessor

Created by The City of Columbia - Community Development Department

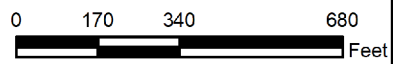
1 inch = 300 feet



SUBJECT SITE

Case # 68-2022 -Lot 3 Horse Fair Subdivision Permanent Zoning

- City Sanitary Line
- City Storm Lines
- BCRSD Sanitary Line
- Columbia City Limit



Parcel Data Source: Boone County Assessor

Created by The City of Columbia - Community Development Department

1 inch = 400 feet