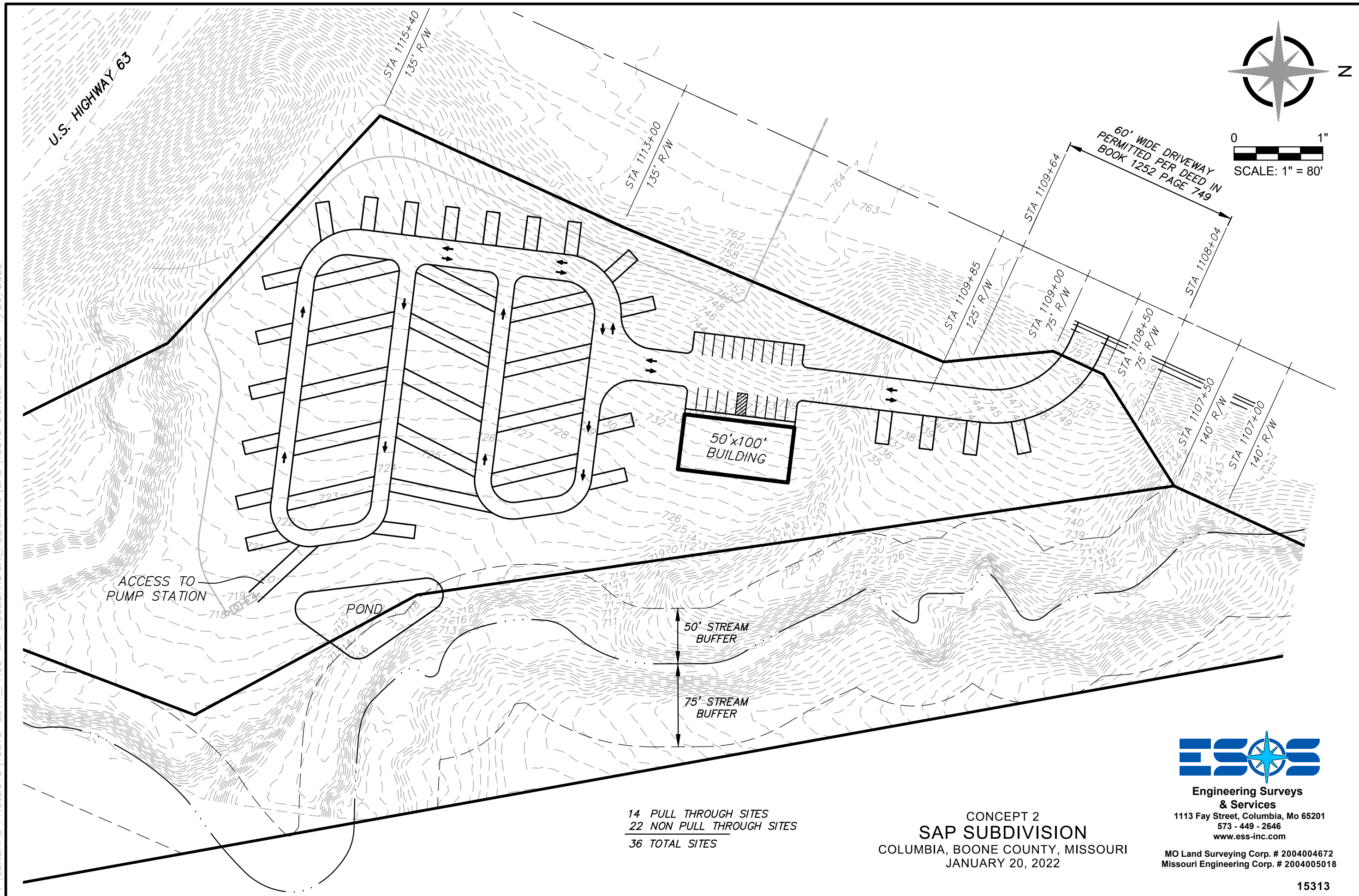


P:\GENERAL PROJECTS\15313-SETH_PAUL-SAP_SUBDIVISION_REZONING\CAD\15313 CONCEPT 2.DWG 1/20/2022



14 PULL THROUGH SITES
22 NON PULL THROUGH SITES
36 TOTAL SITES

CONCEPT 2
SAP SUBDIVISION
COLUMBIA, BOONE COUNTY, MISSOURI
JANUARY 20, 2022



**Engineering Surveys
& Services**
1113 Fay Street, Columbia, Mo 65201
573 - 449 - 2646
www.ess-inc.com
MO Land Surveying Corp. # 2004004672
Missouri Engineering Corp. # 2004005018